



ITINERARY FOR ALL ABOUT YOU TRAVEL UNLIMITED SOUTH AFRICA & ZAMBIA

16 – 30 March 2027 (or 31 March 2027 if extended in Johannesburg)



<https://www.andBeyond.com/>

<https://www.facebook.com/andBeyondTravel/>

[andbeyondtravel](https://www.andbeyondtravel.com/)

Let your imagination soar

Journey overview

Johannesburg

Once a rough mining shanty town, Johannesburg has grown into Africa's second-largest city and a common gateway for South African tours. The city owes its beginnings to prospector George Harrison, who discovered gold, pegged the first claim, sold it for only £10, and vanished soon after. Built on one of the richest gold reefs in the world, Johannesburg today is a vibrant metropolis and the driving force of the nation's economy.

Motswari Private Game Reserve

Renowned for its remoteness, exceptional safari experiences, and warm hospitality, the lodge upholds the legacy of its founder, the late Paul Geiger, a passionate conservationist and visionary. His daughter, Marion Geiger, and her husband, Fabrice Orengo de Lamazière, share insights into Motswari's rich heritage, which is deeply rooted in community and reflects the gracious spirit of its founding family.

Cape Town

Hailed as one of the most spiritual places on the African continent, the unforgettable flat-top of iconic Table Mountain in Cape Town, South Africa, towers over a city that is vibrant both in its attractions and the people that inhabit it. To access Table Mountain, visitors can enjoy a scenic ride up its revolving cableway. As a coastal destination, Cape Town experiences unpredictable weather so be sure to take advantage of your clear, calm days in the city.

Livingstone/Victoria Falls

Long before Scottish explorer Dr. David Livingstone arrived in 1855, the local Batonga people had named the Falls Mosi-oa-Tunya, meaning "the smoke that thunders." Livingstone later renamed them in honour of his queen. Today, the village is known as the Adrenaline Capital of Africa, offering endless adventures.

What we love about this journey

- Table Mountain and City Tour - Half Day
- Cape Point Tour - Full Day
- Cape Winelands Tour - Full Day
- Wildlife and Safaris
- Sundowner Cruise - African Queen or African Princess (Zambia)
- Private Tour of the Falls - Zambia
- 22/25 Minute Helicopter Flight - Scenic Flight over the Falls



At a glance



16 - 30 March 2027

14 nights / 15 Days

16-17 Guests + 2 Tour Leaders

DATE	DAY	PROGRAMME
16 Mar 2027	Tuesday	<ul style="list-style-type: none"> VIP Meet & Greet at OR Tambo International Airport Private transfer from OR Tambo International Airport to Saxon Hotel Villas & Spa <p>Overnight at Saxon Boutique Hotel Villas & Spa</p>
17 Mar 2027	Wednesday	<ul style="list-style-type: none"> Day at Leisure <p>Overnight at Saxon Boutique Hotel Villas & Spa</p>
18 Mar 2027	Thursday	<ul style="list-style-type: none"> Private transfer from Saxon Hotel Villas & Spa to OR Tambo International Airport Scheduled flight 4Z871 from Johannesburg to Hoedspruit Private transfer from Hoedspruit - Eastgate Airport to Motswari Private Game Reserve Included activities: Afternoon safari 4x4 <p>Overnight at Motswari Private Game Reserve</p>
19 Mar 2027	Friday	<ul style="list-style-type: none"> Included activities: Wildlife and Safaris (morning & afternoon safari 4x4) <p>Overnight at Motswari Private Game Reserve</p>
20 Mar 2027	Saturday	<ul style="list-style-type: none"> Included activities: Wildlife and Safaris (morning & afternoon safari 4x4) <p>Overnight at Motswari Private Game Reserve</p>
21 Mar 2027	Sunday	<ul style="list-style-type: none"> Private transfer from Motswari Private Game Reserve to Hoedspruit - Eastgate Airport Scheduled flight 4Z656, from Hoedspruit to Cape Town Private transfer from Cape Town International Airport to Taj Cape Town <p>Overnight at Taj Cape Town</p>

22 Mar 2027	Monday	<ul style="list-style-type: none"> Day at leisure Transfer from Taj Cape Town to Papa Ron's Shisa Nyama for dinner <p>Overnight at Taj Cape Town</p>
23 Mar 2027	Tuesday	<ul style="list-style-type: none"> Included activities Table Mountain and City Tour - Half Day, The Bungalow Restaurant - Clifton <p>Overnight at Taj Cape Town</p>
24 Mar 2027	Wednesday	<ul style="list-style-type: none"> Included activities Cape Point Tour - Full Day, Harbour House Restaurant Kalk Bay <p>Overnight at Taj Cape Town</p>
25 Mar 2027	Thursday	<ul style="list-style-type: none"> Included activities Cape Winelands Tour - Full Day: Tokara Wine Estate & Starke Conde Wines, Lunch at Post Card Cafe <p>Overnight at Taj Cape Town</p>
26 Mar 2027	Friday	<ul style="list-style-type: none"> Private transfer from Taj Cape Town to Cape Town International Airport Scheduled flight 4Z920 from Cape Town to Johannesburg, connecting with 4Z482 from OR Tambo International Airport to Harry Mwanga Nkumbula International Airport Private transfer from Harry Mwanga Nkumbula International Airport to The Royal Livingstone Victoria Falls Zambia Hotel by Anantara Included activities Sundowner Cruise - African Queen/Princess - Zambia <p>Overnight at The Royal Livingstone Victoria Falls Zambia Hotel by Anantara</p>
27 Mar 2027	Saturday	<ul style="list-style-type: none"> Included activities: Private Tour of the Falls - Zambia, Royal Livingstone Express Dinner Run - Zambia <p>Overnight at The Royal Livingstone Victoria Falls Zambia Hotel by Anantara</p>
28 Mar 2027	Sunday	<ul style="list-style-type: none"> Included activities: 25 min Helicopter - Scenic Flight over the Falls <p>Overnight at The Royal Livingstone Victoria Falls Zambia Hotel by Anantara</p>
29 Mar 2027	Monday	<ul style="list-style-type: none"> Day at Leisure or optional activities <p>Overnight at The Royal Livingstone Victoria Falls Zambia Hotel by Anantara</p>
30 Mar 2027	Tuesday	<ul style="list-style-type: none"> Private transfer from The Royal Livingstone Victoria Falls Zambia Hotel by Anantara to Harry Mwanga Nkumbula International Airport Scheduled flight 4Z 483 from Livingstone to Johannesburg Departure on International flight back home <p><i>OR Optional:</i></p> <ul style="list-style-type: none"> Private transfer from OR Tambo to Hotel in Johannesburg Overnight at Radisson Blu Gautrain
30 Mar 2027	Wednesday	<ul style="list-style-type: none"> <i>Included activities: Full day Johannesburg, Apartheid Museum and Johannesburg City Tour, lunch at Sakhumzi Restaurant</i> <i>Transfer to OR Tambo International Airport</i> <i>Departure</i>

Expect the extraordinary

16 - 18 March 2027

Saxon Boutique Hotel Villas & Spa

Johannesburg, South Africa

Day 1: Tuesday, 16 March 2027

Upon arrival at OR Tambo International Airport in Johannesburg, you will be met by a Menzies Aviation representative, assisted with luggage collection and accompanied to the fastest available queues through customs and immigration (if you arrive on an international flight). A “fast-track” service is not guaranteed, but your handler will be present to assist you every step of the way to ensure a seamless arrivals experience.

You will then be guided into the arrivals hall to meet your Driver. An andBeyond representative will collect you at OR Tambo International Airport and drive you to Saxon Boutique Hotel, Villas & Spa.

Check in and time at Leisure after long flight.

Dinner to your own account.

Delight in your 2 night stay at Saxon Boutique Hotel, Villas & Spa in a Villa Luxury Suite with ensuite bathroom. Your stay includes breakfast in your suite or in Qunu Restaurant each morning, mini bar and mini bar snacks, Wi-Fi, use of the Saxon Spa hydro facilities, 24-hour general hotel butler service, 24-hour access to our fitness centre, bottle of sparkling wine on arrival.

Day 2: Wednesday, 17 March 2027

Day at Leisure to relax at the pool or at The Saxon Spa (spa treatments not included in the package).

Lunch & Dinner to own account.



Expect the extraordinary

16 - 18 March 2027

Saxon Boutique Hotel Villas & Spa

Johannesburg, South Africa

Cushioned in lush, landscaped gardens, the exclusive **Saxon Boutique Hotel, Villas and Spa** lies within the tree-lined suburb of Sandhurst. The magnificent suites feature four-poster beds and large bay windows, as well as views that look out over the gardens or the pool area. Each has an ensuite bathroom, satellite television and surround-sound music system.

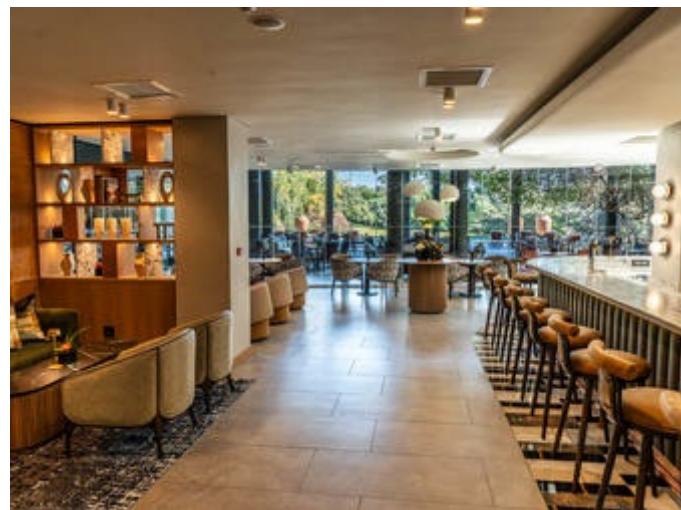
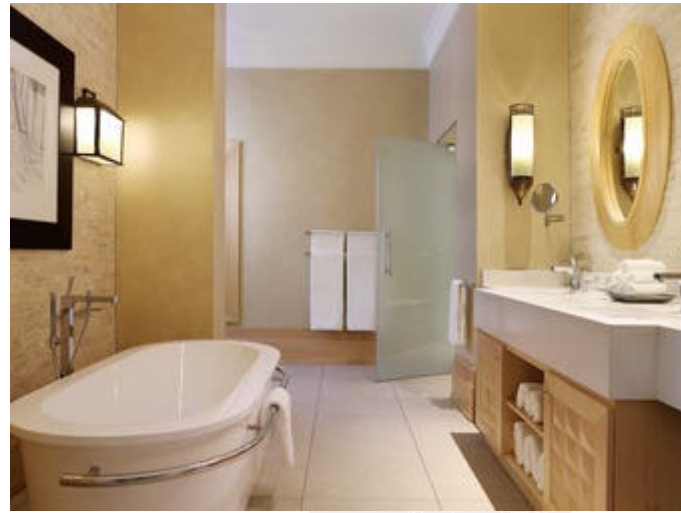
World-class chefs serve up delectable fare such as African game and mouth-watering seafood delicacies in the hotel's elegant restaurant, while the wine cellar and dining library offer novel locations for intimate dinners. Guests can relax at the Pool Terrace before retreating to the Olive Bar, while the more energetic few will be thrilled with the outdoor heated infinity pool (with underwater music) and a well-equipped gym. Those in need of pampering can unwind with a treatment in the award-winning spa.

WHAT WE LOVE ABOUT SAXON BOUTIQUE HOTEL, VILLA & SPA

Enjoy the personal attention of the professional butler service.

Inform your butler about your dining preferences and have your individual tastes catered to by internationally-acclaimed chefs.

Try out the refreshingly different Sound Therapy treatment. Book one of these sessions to re-awaken your mind, body and soul with the enchanting sounds of gongs, cymbals and bells.



Expect the extraordinary

18 - 21 March 2027

Motswari Private Game Reserve

Timbavati Private Nature Reserve, South Africa

Day 3: Thursday, 18 March 2027

After breakfast, you will be collected from The Saxon Hotel and driven to OR Tambo International Airport.

Upon arrival at Johannesburg International Airport, you will be met by a representative from Menzies Aviation who will assist you with check-in procedures for your departure flight to Hoedspruit.

Scheduled flight 4Z871 from Johannesburg to Hoedspruit, departing at 10:30 and arriving at 11:30.

Private road transfer from Hoedspruit Airport and driven to Motswari Private Game Reserve (approx. 1 hour 30 min).

Lodge orientation will take place at check-in. Details regarding meal venues, meeting points for game drives, and other relevant information will be shared during the orientation.

15h00 Late Lunch/High Tea

16h00 Departure for the afternoon game drive 4x4

Return to the Lodge for a dinner.

Delight in your 3 night stay at Motswari Private Game Reserve in a Main Camp Bungalow with ensuite bathroom. Your stay includes all meals, teas and coffees, local spirits and beers, house wines and soft drinks, Wi-Fi in designated public areas only (not in bedrooms) and two game drives daily with mineral water and refreshments.

Included activities:

- Wildlife and Safaris (afternoon safari 4x4)

Day 4 & Day 5: Friday, 19 March 2027 & Saturday, 20 March 2027

Safari program at the Lodge (estimated timings, subject to change):

Early Morning (approx. 5:00 AM - 6:00 AM): Wake-up call, followed by tea, coffee, and snacks.

Morning Safari Drive (approx. 6:00 AM - 9:30 AM): Sunrise game drive in an open Land Rover with professional guides and trackers. A break for coffee is usually taken in the bush.

Breakfast/Brunch (approx. 9:30 AM - 10:30 AM): A hearty meal served back at the lodge.



Optional Bush Walk (approx. 10:30 AM - 11:30 AM): Guided walking safari, available upon request to explore smaller flora and fauna.

Leisure Time (Mid-day): Relax by the pool, visit the library/art gallery, or enjoy a spa treatment.

High Tea/Lunch (approx. 2:30 PM - 3:30 PM): A substantial late lunch is served.

Afternoon/Evening Safari Drive (approx. 3:30 PM - 6:30 PM/7:00 PM): Afternoon drive including the traditional "sundowner" drinks stop at sunset, followed by a night drive to spot nocturnal animals.

Dinner (approx. 7:30 PM - 8:30 PM): Dinner is often served in the open-air boma under the stars or on the veranda.

Included activities:

- Wildlife and Safaris (Morning & Afternoon)



Expect the extraordinary

18 - 21 March 2027

Motswari Private Game Reserve

Timbavati Private Nature Reserve, South Africa

Motswari Private Game Reserve is considered to be a South African jewel set within the verdant Timbavati Private Nature Reserve, which is part of the world-renowned Kruger National Park.

The understated luxury of this traditional, vintage bush lodge promises an authentic African safari experience. The 15 Luxurious bungalows at Motswari Game Lodge and 4 Private Bedrooms at Geiger's Camp include sumptuous beds, spacious ensuite bathrooms, air-conditioning and magnificent bush and river views.

Guests can enjoy sensational culinary fare in the outdoor boma, the elegant dining room or in the middle of the bush - the delectable meals are accompanied by an award-winning selection of South African wines. Guests can escape the scorching heat by plunging into the cool depths of the sparkling swimming pool. A well-stocked library, boutique store and an art gallery all add to guest delight. Adventures include guided walking safaris, birdwatching, nature walks and incredible morning and late afternoon game drives, when the animals are most active and the scenery is at its most spectacular.

WHAT WE LOVE ABOUT MOTSWARI PRIVATE GAME RESERVE

Home-made rusks, fresh fruit, tea and coffee beckon you from your chalet as the camp gathers in anticipation of another thrilling day in awe of nature's beauty.

A walk to the magnificent sculpture garden is an absolute must - visiting artists are encouraged to contribute to the garden, where they leave their work for other visitors to view and admire.



Expect the extraordinary

21 - 26 March 2027

Taj Cape Town

Cape Town, South Africa

Day 6: Sunday, 21 March 2027

After breakfast check out from Motswari Safari Lodge.

Private Road Transfer to Hoedspruit Airport (transfer time approx. 1 hour 30 minutes).

Scheduled flight 4Z656 from Hoedspruit to Cape Town, departing at 14:10 and arriving at 16:55.

Upon arrival at Cape Town International Airport, you will be met by a Menzies Aviation representative, assisted with luggage collection and walked into the arrivals hall to meet your local Cape Town Guide.

As you drive toward the city, enjoy views of the iconic Table Mountain, one of the most spiritual places on earth, with two oceans and the beautiful city of Cape Town at its feet.

Check in to the Hotel & time at Leisure.

Relax during your 5 night stay at the TAJ Cape Town Hotel in a Luxury Mountain Facing Room or Luxury City Facing with ensuite bathroom. Your stay includes breakfast.

Day 7: Monday, 22 March 2027

Day at leisure

Meet in the hotel lobby at 5:30 pm for your transfer to Papa Ron's Shisa Nyama.

Day 8: Tuesday, 23 March 2027

Included activities:

- Table Mountain and City Tour - Half Day (08:00 - 12:30)
- The Bungalow Restaurant - Clifton (Lunch) (13:00 - 15:00)

Begin your scenic tour of Cape Town at the iconic Table Mountain, or, if weather conditions are not favourable, at the flat-topped Signal Hill. Stroll through Greenmarket Square, one of the city's oldest and most vibrant markets, before taking a walk through the historic Company's Garden, established by Dutch settlers in 1652.

Drive past the Houses of Parliament, the Castle of Good Hope, and the Slave Lodge, once home to thousands of slaves owned by the Dutch East India Company. Continue to the traditional Malay Quarter in the predominantly Muslim Bo-Kaap, known for



its brightly coloured houses that date back to the 17th century. Pause to listen to the firing of the noonday gun from Signal Hill.

Conclude the morning with a leisurely lunch at The Bungalow Restaurant in Clifton, an elegant oceanfront venue offering relaxed coastal dining and sweeping views of the Atlantic Ocean. The menu highlights fresh seafood, grilled dishes, and local favourites, served in a stylish beach-house setting.

Day includes:

- Table Mountain Fast Track tickets (09:30)
- Lunch (Set Menu)

Day excludes:

- Beverages during lunch and gratuities

Day 9: Wednesday, 24 March 2027

Included activities:

- Cape Point Tour - Full Day (08:00 - ±18:00)
- Harbour House Restaurant Kalk Bay (Lunch) (13:30 - 15:00)

This full-day tour explores the scenic highlights of the Cape Peninsula, beginning with the four secluded beaches of Clifton and the sidewalk cafés and bars of trendy Camp's Bay.

Travel along the spectacular Atlantic Seaboard, passing the pristine beaches of Clifton and Camp's Bay, with their soft white sand and turquoise water. The towering peaks of the Twelve Apostles rise above the road on one side, while sheer cliffs drop down to the icy Atlantic Ocean on the other. Continue through Hout Bay and over the breathtaking Chapman's Peak Drive to the Cape of Good Hope Nature Reserve, home to unique fynbos vegetation that supports a variety of antelope, birds, Cape mountain zebra, and baboons. Take the funicular to the lighthouse at Cape Point, where the Atlantic and Indian Oceans meet.

On your return to Cape Town, visit Boulders Beach, just outside the naval base of Simon's Town, to view the large breeding colony of African penguins.

Enjoy lunch at Harbour House Restaurant in Kalk Bay, a stylish seaside venue perched on the water's edge. Known for its fresh seafood and relaxed coastal charm, it offers sweeping views of the harbour and False Bay, with waves often crashing just below the deck.

Return to the Lodge in the late afternoon.

Day includes:

- Park and entry fees - Chapman's Peak, Cape Point Nature Reserve, Funicular Return, Penguins at Boulders Beach
- Lunch



Day excludes:

- Beverages and gratuities

Included activities:

- Cape Peninsula and Cape Point

Day 10: Thursday, 25 March 2027

Included activities:

- Cape Winelands Tour - Full day (09:00 - 18:00)
- Postcard Cafe at Stark-Condé Wines (Lunch) (12:30 - 14:00)

Depart from the Taj Hotel for a full-day tour through the scenic Cape Winelands. Begin your day at Tokara Wine Estate, a contemporary winery on the Helshoogte Pass offering exceptional wines and sweeping views of the Stellenbosch Valley.

Continue to a boutique winery located in the Jonkershoek Valley of Stellenbosch. South Africa is known for producing high-quality, handcrafted red wines, particularly Cabernet Sauvignon and Syrah. The estate is celebrated for its picturesque setting and its "jewel-box" tasting room situated over a lake. Wine Tasting & Lunch.

After lunch, travel to Stellenbosch. South Africa's second-oldest town provides another glimpse of classic 17th and 18th century Cape style, with a chance to browse quaint Dorp Street, visit the museum or explore the many galleries and shops of this university town.

Day includes:

- Wine tastings
- Lunch

Day excludes:

- Beverages and gratuities



Expect the extraordinary

21 - 26 March 2027

Taj Cape Town

Cape Town, South Africa

The ultra-elegant Taj Cape Town lies at the centre of historic Cape Town. The hotel marries old-world splendour with modern-day luxuries, accompanied by warm Indian hospitality. Truly exceptional rooms and suites offer a tranquil cocoon from the lively bustle of the city. The historic structure of the Taj Cape Town is home to exquisite Heritage Rooms and Suites, Tower Rooms and Suites, The Presidential Suite and the Taj Club. All rooms boast beautiful ensuite bathrooms, air conditioning, underfloor heating, personal bars, satellite television and multimedia workstations. The culinary experiences range from sublime Indian food at the Bombay Brasserie to delectable seafood at Twankeys and informal all-day dining at Mint. The hotel also boasts a cocktail bar and cigar lounge. Guests can work out at the fitness centre or seek sanctuary in the Taj's exceptional spa, where treatments range from massages and body scrubs to Ayurvedic therapies.

WHAT WE LOVE ABOUT TAJ CAPE TOWN

Guests staying on the Taj Club Floor or in a suite can enjoy complimentary value-adds such as private in-room check-in, Taj Club reception, welcome drinks, evening canapés and cocktails, private breakfast in The Taj Club Lounge, daily international newspapers, dedicated butler service throughout your stay.

Select a Taj Cape Town Jiva Grande Spa signature treatment or holistic therapy, which draws on ancient Indian healing wisdom and Ayurveda using products produced solely for Jiva Spa's worldwide.



Expect the extraordinary

26 - 30 March 2027

The Royal Livingstone Victoria Falls Zambia Hotel by Anantara

Livingstone, Zambia

Day 11: Friday, 26 March 2027

Early check out at approx: 05h00 & transfer from The Taj Hotel to Cape Town International Airport.

Upon arrival at OR Tambo International Airport, you will be met by a representative from Menzies Aviation, who will assist you with check in procedures for your departure flight.

Scheduled flights: 4Z920 Cape Town to Johannesburg, 07h00 - 09h00 to connect with 4Z482 Johannesburg to Livingstone, 10:50 - 12:35.

Upon arrival at you will be met by a Wild Horizons representative and be driven with fellow guests to Royal Livingstone.

Private transfer to Royal Livingstone Hotel by Anantara & Check in. Time to relax and freshen up.

Sundowner Cruise - The African Queen and Princess meanders slowly upstream along the length of the Mosi-oa-Tunya National Park looking for game on the way. A number of animals and a host of bird species can be viewed from comfortable chairs on cool wooden decks. Excellent food is served on board and the bar is well stocked with spirits, good wines, beers and soft drinks.

Enjoy the sights during your 4 night stay at The Royal Livingstone Hotel by Anantara in a Deluxe Zambezi River Balcony Room with ensuite bathroom. Your stay includes breakfast.

Included activities:

- Sundowner Cruise - African Queen/Princess - Zambia (Afternoon)

Day 12: Saturday, 27 March 2027

Included activities:

- Private Tour of the Falls - Zambia (Morning)
- Dinner on the Royal Livingstone Express

Private Tour of the Falls - Zambia Tour of the Falls. Described by the Kololo tribe living in the area in the 1800's as 'Mosi-oa-Tunya' - The Smoke that Thunders - and in more modern terms as 'The greatest known curtain of falling water', Victoria Falls are a spectacular sight of awe-inspiring beauty and grandeur on



the Zambezi River, bordering Zambia and Zimbabwe. A path along the edge of the forest provides the visitor who is prepared to brave the tremendous spray with an unparalleled series of views of the Falls. One special vantage point is across the Knife edge bridge, where visitors can have the finest view of the Eastern Cataract and the Main Falls as well as the Boiling Pot where the river turns and heads down the Batoka Gorge. Other vantage points include the Falls bridge and the Lookout Tree which commands a panoramic view across the Main Falls.

Historic Train Dinner Safari on Royal Livingstone Express - Bespoke fine-dining adventure on board a restored steam train that travels through scenic bushveld and along the Zambezi River Valley, Step into a timeless era and experience the romance of rail travel through Zambia's stunning landscapes. This exquisite journey blends vintage luxury with the splendour of the African bush, featuring a 5-star dining experience as you traverse the route to the iconic Victoria Falls Bridge; Smart casual dress code applies,

Included activities:

- Private Tour of the Falls - Zambia
- Royal Livingstone Express Dinner Run - Zambia

Day 13: Sunday, 28 March 2027

After breakfast experience 25 Minute Helicopter Flight of the Angels. Embark on a thrilling aerial tour over the majestic Victoria Falls witnessing the immense power of the cascading water from a unique vantage point. As the helicopter soars above the Falls, you are treated to panoramic views of the Zambezi River, the lush rainforest surrounding the Falls, the magnificent spray rising into the air, the Batoka Gorge and the Mosi-Oa-Tunya National Park from above. The Flight of the Angels offers an awe-inspiring perspective, capturing the grandeur and splendour of the Victoria Falls in an unforgettable way.

Included activities:

- 25 min Helicopter - Scenic Flight over the Falls

Day 14: Monday, 29 March 2027

Day at Leisure or optional activities at extra charge:

- Dambwa Market Tour
- Village Tour - Mukuni or Simonga - Zambia
- Elephant Interaction incl Transfers - Zambia
- Lunch - Jetboat & Lunch with the Elephants at Elephant Café
- Day Trip - Chobe Trip - Botswana ex Zambia
- Rhino Walk - Zambia



Expect the extraordinary

26 - 30 March 2027

The Royal Livingstone Victoria Falls Zambia Hotel by Anantara

Livingstone, Zambia

Tucked in between the verdant flora of the Mosi-Oa-Tunya National Park and the banks of the mighty Zambezi River, The Royal Livingstone Hotel provides guests with an atmosphere that captures the opulence of a bygone era. Elegant suites are situated in two-storey clusters that are inspired by the grand estates of times past. Each suite is appointed a private butler and includes an ensuite bathroom, air conditioning, private balcony and a terrace that offers spectacular views of the river.

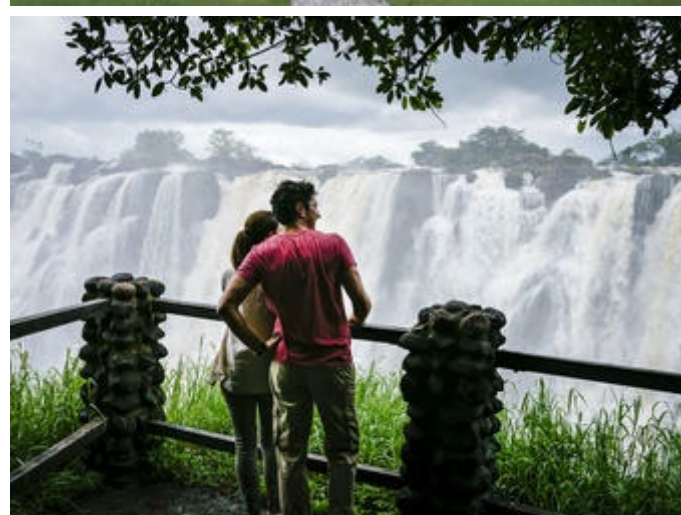
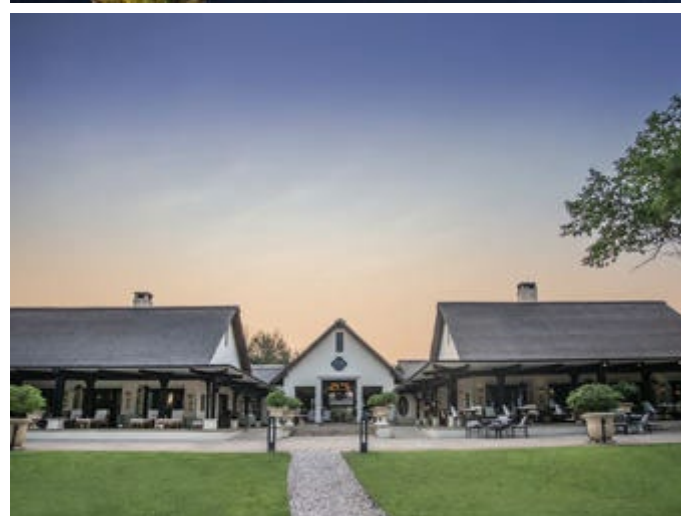
Guests can unwind in the cool shade of the travelers' bar and sitting room while savoring an impeccably served high tea or delight in a refreshing dip in the sparkling swimming pool before tucking into delectable dishes from the restaurant's à la carte menu. Adventurous guests can experience an elephant back safari or game drive, and adrenaline enthusiasts can seek thrills from bungee jumping to abseiling and white river rafting.

WHAT WE LOVE ABOUT THE ROYAL LIVINGSTONE

Sip on your favorite cocktail on the spacious sundeck overlooking the Zambezi River and admire the spectacular views as the sun sinks slowly into its calm waters.

Indulge in a traditional high tea in the coolness of the shaded veranda, which opens onto perfectly manicured lawns.

Treat yourself to an unforgettable dinner aboard the luxurious Royal Livingstone Express – be sure to take your camera to capture your red carpet moment.



Expect the extraordinary

30 March 2027

Departure

Livingstone, Zambia

Day 15: Tuesday, 30 March 2027

You will be collected by a Wild Horizons representative from The Royal Livingstone and be driven by private vehicle to Harry Mwanga Nkumbula International Airport [LVI].

Scheduled flight 4Z 483 Livingstone to Johannesburg, departing 13:15, arriving 15:00.

Upon arrival at OR Tambo International Airport, you will be met by a Menzies Aviation representative who will assist you through customs and immigration. Afterward, the representative will direct you to the luggage claim area and then escort you to the international check-in counters, so you know where to go later.

Check-in typically opens three to four hours prior to departure. You will not have access to airline lounges until you have checked in and passed through security and immigration.

OR

Alternatively at additional cost: Private Transfer to the Hotel in Johannesburg & overnight.

Overnight at Radisson Blu Gautrain

31 March 2027

Departure

Johannesburg, South Africa

Day 16: Wednesday, 31 March 2027

Included activities:

- *Johannesburg & Soweto Tour - Full day (09:00 - 16:30)*
- *Sakhumzi Restaurant (Lunch) (12:45 - 13:45)*

Depart from the Radisson Blu Gautrain Hotel for a full-day tour exploring Johannesburg's rich history and culture. Begin at the Apartheid Museum, a powerful and thought-provoking exhibition that traces South Africa's journey from segregation to democracy. Continue to Mandela House in Soweto, the former home of Nelson Mandela, now a museum showcasing his life and legacy. Enjoy a traditional buffet lunch at Sakhumzi Restaurant, located on the famous Vilakazi Street, the only street in the world where two Nobel Peace Prize winners once lived. After lunch, visit the Hector Pieterse Museum, dedicated to the 1976 Soweto Uprising and the students who played a pivotal role in South Africa's struggle for freedom.

The tour concludes with a drive to OR Tambo International Airport for your international flight back home.





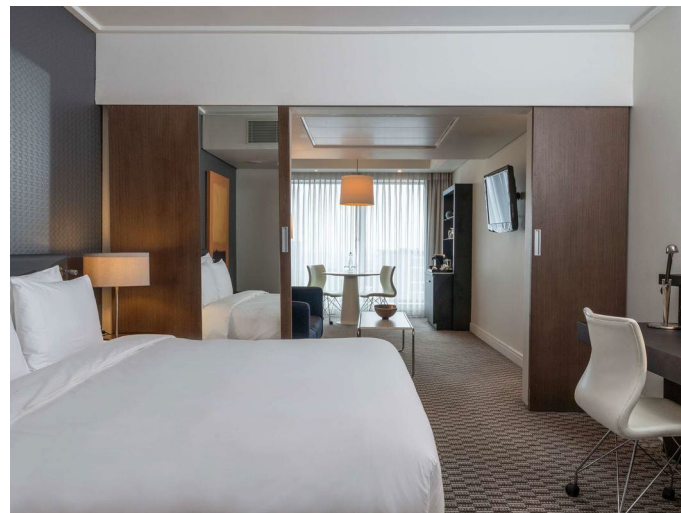
Expect the extraordinary

18 - 20 November 2025

Radisson Blu Gautrain Hotel

Johannesburg, South Africa

Radisson Blu Gautrain Hotel, located in Sandton, Johannesburg, offers luxurious accommodations in the heart of the city's vibrant business district. The hotel features a variety of room types, including Standard Rooms, Superior Rooms, and Suites, all equipped with modern amenities such as free Wi-Fi, coffee and tea facilities, and TVs. Guests can enjoy facilities like the on-site Central One Restaurant, Central One Bar, a 10th-floor fitness centre, and an outdoor swimming pool. Activities available to guests include exploring nearby attractions such as the Johannesburg Art Gallery, Neighbourgoods Market, and Constitution Hill.



Journey overview

Package price (excluding local & regional flights)

Min 16 Full Paying Guests

USD 10,200.00 per person sharing

Min 17 Full Paying Guests

USD 10,090.00 per person sharing

Single Supplement

USD 4,565.00 per person per stay

1x night Extension in Johannesburg with Full Day Tour Soweto, Apartheid Museum & Lunch, Airport Transfer:

- min 2 Guests: USD 880.00 per person sharing
- min 4 Guests: USD 530.00 per person sharing
- min 6 Guests: USD 411.00 per person sharing

Single Supplement: USD 80.00 per person

Scheduled flight: Johannesburg - Hoedspruit **Estimated costs only - only able to quote 12 months in advance**

Costs are based on 16 full paying guests

4Z871 JNB HDS 1030 1130

USD 275.00 per person ***each of 16 guests**

Scheduled flight: Hoedspruit - Cape Town **Estimated costs only - only able to quote 12 months in advance**

Costs are based on 16 full paying guests

4Z656 HDS CPT 1410 1655

USD 365.00 per person ***each of 16 guests**

Scheduled flights: Cape Town - Johannesburg - Livingstone **Estimated costs only - only able to quote 12 months in advance**

Costs are based on 16 full paying guests

4Z920 CPT JNB 0700 0905

4Z482 JNB LVI 1050 1235

USD 600.00 per person ***each of 16 guests**

Scheduled flights: Livingstone - Johannesburg **Estimated costs only - only able to quote 12 months in advance**

Costs are based on 16 full paying guests

4Z483 LVI JNB 1315 1525

USD 365.00 per person ***each of 16 guests**

Scheduled flight: Johannesburg - Hoedspruit **Estimated costs only - only able to quote 12 months in advance**

Costs are based on 16 full paying guests

4Z871 JNB HDS 1030 1130

USD 275.00 per person ***each of 16 guests**

Scheduled flight: Hoedspruit - Cape Town **Estimated costs only - only able to quote 12 months in advance**

Costs are based on 16 full paying guests

4Z656 HDS CPT 1410 1655

USD 365.00 per person ***each of 16 guests**

Scheduled flights: Cape Town - Johannesburg - Livingstone **Estimated costs only - only able to quote 12 months in advance**

Costs are based on 16 full paying guests

4Z920 CPT JNB 0700 0905

4Z482 JNB LVI 1050 1235

USD 600.00 per person ***each of 16 guests**

Scheduled flights: Livingstone - Johannesburg **Estimated costs only - only able to quote 12 months in advance**

Costs are based on 16 full paying guests

4Z483 LVI JNB 1315 1525

USD 365.00 per person ***each of 16 guests**

Flights not included in the package, price given separately:

DATE	FLIGHT#	DETAILS	CLASS	DEPARTURE	ARRIVAL
18 Mar 27	4Z871	Johannesburg to Hoedspruit	Economy	10:30 AM	11:30 AM
21 Mar 27	4Z656	Hoedspruit to Cape Town	Economy	02:10 PM	04:55 PM
26 Mar 27	4Z920	Cape Town to OR Tambo International Airport	Economy	07:00 AM	09:05 AM
26 Mar 27	4Z482	OR Tambo International Airport to Harry Mwanga Nkumbula International Airport	Economy	10:50 AM	12:35 PM
26 Mar 27	4Z483	Harry Mwanga Nkumbula International Airport to OR Tambo International Airport	Economy	01:15 PM	03:00 PM

Transfers included

DATE	TIME	DETAILS
16 Mar 27		OR Tambo International Airport to Saxon Hotel Villas & Spa
18 Mar 27		Saxon Hotel Villas & Spa to OR Tambo International Airport
18 Mar 27		Hoedspruit - Eastgate Airport to Motswari Private Game Reserve
21 Mar 27		Motswari Private Game Reserve to Hoedspruit - Eastgate Airport
21 Mar 27		Cape Town International Airport to Taj Cape Town
26 Mar 27		Taj Cape Town to Cape Town International Airport

26 Mar 27		Harry Mwanga Nkumbula International Airport to The Royal Livingstone Victoria Falls Zambia Hotel by Anantara
30 Mar 27		The Royal Livingstone Victoria Falls Zambia Hotel by Anantara to Harry Mwanga Nkumbula International Airport
<i>Optional:</i>		
30 Mar 27		<i>OR Tambo International Airport to Radisson Blu Gautrain</i>
30 Mar 27		<i>Johannesburg City to OR Tambo Airport</i>

Accommodation

DATE	DESTINATION	ACCOMMODATION	DETAILS
16 Mar 27 to 18 Mar 27	Johannesburg	Saxon Boutique Hotel Villas & Spa	1x Villa Luxury Suite - single 8x Villa Luxury Suite - double/twin 1x Villa Luxury Suite - twin for 2 TL Breakfast included; Excluding Drinks
18 Mar 27 to 21 Mar 27	Timbavati Private Nature Reserve	Motswari Private Game Reserve	1x River Bungalow River - single 8x Bush Bungalows - double/twins 1x Guide Room - twin for 2 TL Fully inclusive; All Local Brands (Spirits, Wine and Beers)
21 Mar 27 to 26 Mar 27	Cape Town	Taj Cape Town	1x Luxury Room City View King Heritage Wing - single 8x Luxury Room Mountain View King Heritage Wing - double/twin 1x Luxury Room City View King Heritage Wing - twin for 2 TL Breakfast included; Excluding Drinks
26 Mar 27 to 30 Mar 27	Victoria Falls (Zambia)	The Royal Livingstone Victoria Falls Zambia Hotel by Anantara	1x Deluxe Zambezi River Balcony Room - single 8x Deluxe Zambezi River Balcony Room - double/twin

			1x Deluxe Zambezi River Balcony Room - twin for 2 TL Breakfast included; Excluding Drinks
	<i>Optional:</i>		
<i>30 Mar 27 to 31 Mar 27</i>	<i>Johannesburg</i>	<i>Radisson Blu Gautrain</i>	<i>1x Standard Room - single, double, twin Breakfast included; Excluding Drinks</i>

Journey overview

What's included:

Community Leaders Education Fund Donation
Accommodation as specified in the itinerary
Meals, drinks and laundry as specified
Private transfers as specified in the itinerary
Sightseeing and excursions as specified in the itinerary
Scheduled game viewing activities as specified in the itinerary
National parks, concession fees where applicable
Emergency medical evacuation insurance

What's not included:

Meals, drinks and laundry not specified in the itinerary or as outlined in the Includes
Premium brand drinks, champagne, cognacs, cellar wines, cigars and cigarettes
Gratuities and any items of a personal nature
Sightseeing and excursions not specified in the itinerary
Flights and transfers not specified in the itinerary
National parks and concession fees not specified in the itinerary
Travel Insurance
Scheduled flights as specified in the itinerary *** price given separate
Domestic/international departure tax, fuel and safety levies from airports and airstrips unless otherwise stipulated

The details are in the fine print

South Africa

General information

INSURANCE

It is essential that adequate travel insurance be taken out prior to departure. It is important to note that it is recommended to purchase travel insurance within 14 days from paying your deposit. This should cover any medical situation such as hospitalisation, as well as cancellation, curtailment of arrangements and baggage. When you travel with andBeyond, you are automatically covered by our emergency evacuation insurance. This guarantees emergency evacuation to the nearest hospital should you suffer either severe illness or injury. This does not cover the cost of treatment once in hospital and in no way replaces your normal travel insurance. There are certain medical exclusions. Please advise us of any existing conditions in advance in order to arrange cover, subject to our insurer's approval. Please contact us for further details.

It is important to note that some travel insurance policies may not be recognized by certain local hospitals; therefore please check with your provider if their product is accepted in your destination and seek alternative cover if necessary.

Medical Emergency Number: +27 83 300 3927 or +27 87 135 3952

CHECK IN

When checking in, some hotels or lodges may take a pre-authorisation hold on your credit card, which will enable you to bill back expenses such as non-included meals, spa treatments or other extras to your room account. Your expenditure will then be subtracted from that hold before releasing the balance at the end of your stay. Reversing the hold may take a few days, depending on your bank. Instead of allowing a pre-authorisation hold to be put on your credit card, you may normally also choose to put down a cash deposit, or a "no post" can be added to your room, which means that you will not be able to charge anything back to your room account but, instead, settle any extras directly in cash.

In accordance with global practice, all hotel and lodge check-in/out times are normally as follows (depending on the specific hotel or lodge): Check-in: 14h00/15h00; Check-out: 10h00/11h00

For self-drive guests it is advisable to arrive at their safari lodge/camp no later than 14h30 as afternoon activities generally start from 15h00.

LANGUAGES

There are 11 official languages in South Africa, although English is widely spoken.

PHOTOGRAPHY

Please be sure to bring sufficient memory cards and batteries as, although these are readily available in all South African cities and towns, there might be no stock available at the safari lodges. Please remember to ask permission before taking a photograph of any South African resident.

Please be advised that the use of Unmanned Aerial Vehicles (Drones) is not allowed in any of the conservation areas we manage, until such time as their impact on wildlife and anti-poaching initiatives can be assessed. This rule will apply throughout Africa, as our partners in various countries and regions have adopted a similar stance.

ACTIVITIES

IMPORTANT UPDATE: Robben Island Museum compulsory Ticket requirements as of 01 December 2018

Please note: Robben Island Museum will no longer accept tickets that do not reflect the ticket holder's full details (name & surname). Should the ticket not correspond to the proof of identification (passport or SA ID document), guests will sadly not be permitted to board the boat to the island.

GRATUITY GUIDELINES

We are often asked for advice concerning gratuities. This is completely at your discretion. However, should you feel that you would like to show your appreciation to the staff; an amount of your choice may be added to your bill or handed to the manager to distribute amongst the staff. Alternatively, you may prefer to personally thank a staff member whom you feel went the extra mile to ensure that your stay was memorable. Envelopes can be found in your room.

The details are in the fine print

If you are unsure how much you would like to give, you may use the below as a guideline:

Per couple per day

Waiters and Drivers	10% of the fare or bill
Airport Meet and Greets	R 30 - R 50 per meet and greet
Baggage Handlers/Porters	R 30 - R 50 per couple
Hotel Doormen/Baggage Handlers	R 30 - R 50 per couple

City Guides

Private transfer	R 165 per transfer
Private half-day tours	R 440 per tour
Private full-day tours	R 880 per tour

On Safari

Ranger/Guide	R 500 per couple per day
Tracker	R 250 per couple per day
Butler	R 250 per couple per day
Lodge/Camp Staff	R 500 per couple per day

CULTURAL AWARENESS

Please note that local laws, religious beliefs and cultural practices in parts of Africa may be more conservative than those in your country of origin. As these must be observed and adhered to, we suggest that guests carry out due diligence on any areas of concern to them and exercise their discretion when travelling in the region.

CONTACT DETAILS

24 Hour Emergency Numbers:

Direct Guests: +27 72 607 6385

DMC Wholesale, DMC Retail & Groups: +27 83 280 7342

Lodge Wholesale & Inbound Sales: +27 83 280 7251

Bateleur Club: +27 83 463 8923

Arusha: +255 789 668 055

Nairobi: +254 733 704 335 or +254 718 649 951

andBeyond, South Africa, Johannesburg

Tel: +27 11 809 4300 (Office Hours Only)

Fax: +27 11 809 4511

24 Hour Emergency Number: +27 60 969 8086 or +27 72 190 1908

Physical Address:

164 Katherine Street, Pin Mill Farm Block F

Sandown, Johannesburg, South Africa

andBeyond, South Africa, Cape Town

24 Hour Emergency Number: +27 72 190 1908 or +27 82 468 1512

Physical Address:

Office 4, 1st Floor, Howard Centre Mall

Pinelands, Cape Town, South Africa

Banking and currency

MONEY

The details are in the fine print

The currency is the South African Rand (ZAR).

Officials may not always be in a position to issue large amounts of change, so please carry small denominations of cash where possible.

Credit cards are widely accepted.

Please note that credit card transactions could take anything up to a few months to go through on guests' cards, especially from more remote areas.

General banking hours in main centres and towns:

Monday - Friday: 09h00 - 15h30

Saturdays: 08h00 - 11h00

Travellers taking goods out of South Africa are able to reclaim VAT. VAT Reclaim Offices are found at Johannesburg, Durban and Cape Town International Airports.

Climate and weather

CLIMATE

South Africa is famous for its sunshine. Over much of South Africa, summer is characterised by hot, sunny weather, often with afternoon thunderstorms that clear quickly. The Western Cape gets most of its rain in winter, with quite a few days of cloudy, rainy weather. Johannesburg lies at an altitude of 1 694 metres (5 560 feet), keeping the average summer temperatures below 30°C (86°F). The hot, humid KwaZulu-Natal coast, as well as the Mpumalanga and Limpopo provinces, offer fantastic winter weather, with sunny, warmish days and virtually no wind or rain.

Food, drink and cuisine advice

DIETARY

Most dietary requirements can be catered for. Please advise us of any specific dietary requirements and these will be communicated to all the properties you will be visiting. Should you require kosher meals these will incur additional costs as they are specially flown in to the more remote destinations (two weeks' prior notice is required).

RESTAURANTS

We recommend pre-booking restaurants for dinner during South Africa's peak seasons.

Clothing and dress recommendations

WHAT TO PACK

As a general guide, comfortable, casual wash and wear clothes are recommended. Muted colours are recommended for game viewing. Game drives are conducted in the early morning and late afternoon, which can be very cold, especially in winter.

The most practical items to pack for safari are:

- Khaki, green, beige and neutral colours
- Shirts with long sleeves (even in summer, as protection from the sun and mosquitoes)
- T-shirts
- Shorts or a light skirt
- Jeans or safari trousers for evenings and cooler days
- Jackets and sweaters are recommended for early morning and evening game drives
- Lightweight water-proof jacket
- Swim and beachwear
- Comfortable walking shoes
- Sun block, sunglasses, hat, moisturizer and lip-salve are all essentials

The details are in the fine print

- Strong insect repellent like Mozzie Guard (www.mosi-guard.com)
- Binoculars and camera equipment
- Good quality safari clothing is available in andBeyond's Safari Shop

You might want to consider some of our recommended travel accessory options:

- These include top quality Thule luggage items, which are not only designed for your total comfort, but also for your ultra-convenience as they are accepted by all andBeyond's preferred flight providers.
- When staying at one of our andBeyond lodges or camps in Africa (excluding our Indian Ocean Island lodges), you can enjoy the exclusive use of one pair of SWAROVSKI OPTIK binoculars per room / suite to share, for the duration of your stay. However, should your itinerary include a stay at one or more of our preferred partner properties and you wish to have access to binoculars throughout your journey, we suggest that you purchase your own pair of SWAROVSKI OPTIK binoculars from our Travel Shop.

Browse our Travel Shop for full details.

And if you would like to purchase safari clothing, or browse other luggage and travel accessories to prepare for your trip, please visit www.andBeyondsafariishop.com for a wide selection of quality products. Also visit <https://andbeyondsafarishopping.com/index.php> and browse the online store.

Laundry: Most lodges, camps and hotels do their best to deliver a same day laundry service, weather permitting. Dry cleaning can be arranged at most hotels but is not available at lodges. At the lodges soap suds are generally provided in your room for delicate items. Please be mindful that, due to culture and customs in many of the areas in which we operate, some lodges/camps do not wash underwear. While most lodges/camps can arrange for your shoes to be polished, we regret that we are unable to provide a service for these to be washed. In most hotels a shoe buff is supplied in the rooms.

Electricity and plug standards

ELECTRICITY

220/240 volts AC, 50Hz. It is possible that lodges in more remote areas do not have electricity and run on generator or solar power.

South Africa increasingly experiences load shedding at times when demand for electricity is high and the power system is constrained. Electricity may be cut off for a number of hours at various times during the day and night. Many hotels have generators, inverters or other alternative power sources, minimising the disruption; however, certain hotels do not wish to create noise disturbance and opt for no generator or to enable the reduced use of appliances only, sometimes limited to only essential lighting. This can be cause for temporary inconvenience or the opportunity to go off the grid.

Health and medical information

HEALTH REQUIREMENTS

Yellow Fever:

andBeyond's Terms and Conditions require you to obtain advice from your medical practitioner or travel clinic before travelling to any destination to determine if you are required to get a yellow fever vaccination, no less than 10 days prior to travel. If required, you must be able to produce a yellow fever certificate as proof of vaccination. Depending on which countries you are traveling to prior or post your stay to South Africa the certificate will be required. The certificate may also be required when re-entering your country of origin, or other African countries, if you have visited a destination within the yellow fever belt. For more information you may consult the following website, but we must reiterate that we advise you to visit your medical practitioner or your closest travel clinic for further information.

[https://www.who.int/publications/m/item/countries-with-risk-of-yellow-fever-transmission-and-countries-requiring-yellow-fever-vaccination-\(november-2022\)](https://www.who.int/publications/m/item/countries-with-risk-of-yellow-fever-transmission-and-countries-requiring-yellow-fever-vaccination-(november-2022))

It is not a requirement to have the yellow fever vaccination to visit South Africa. However, proof of vaccination will be required if visitors are coming from another country where the risk of transmitting yellow fever is high. All travellers over the age of 1 year (9 months for certain neighbouring countries) are then required to have the yellow fever vaccination if they have:

The details are in the fine print

- Recently visited a high-risk country
- Spent over 12 hours in transit in a high-risk country

If guests cannot have a yellow fever vaccination for medical reasons a doctor's letter needs to be provided; signed, stamped and on an official letterhead.

Ticks:

Ticks can be found in Africa's wilderness areas. To avoid getting bitten when going on bush walks, guests are advised to take precautions by wearing long trousers, socks and boots. Please note that there is a possibility that tick bites could lead to tick bite fever. Symptoms include fever, headaches and painful, enlarged lymph glands in the area of the bite. If you experience these symptoms after returning home, please visit your doctor and advise them of the possibility of tick bite fever.

Malaria:

Please consult your physician for advice on malaria precautions before travel to South Africa.

Allergies, Medication and Prescriptions:

If you suffer allergies, it is advised to take counteracting medication with you, because the medication may not be available due to the remoteness of these destinations.

If on medication at time of travel please ensure that you bring sufficient supply for the entire trip, as it may be difficult to obtain after arrival. This applies to any malaria prophylaxis, prescriptions, chronic or preferred brand medication.

Safety information

SAFETY

Like anywhere else in the world, visitors must always take reasonable precautions as opportunistic crime does happen and it can be best described as when an opportunity presents itself and subsequently tempts a person to steal.

Most accommodations offer in-room or reception safes to secure your valuables.

Visitors are advised not to leave their belongings or personal property unattended.

Do not carry large sums of money or valuables on you personally.

Always buy your excursions from a licensed operator, your hotel or travel agent representatives can assist you with verification.

Travel, transport and getting around

FLIGHTS

Check-in is 1½ hours prior to departure for domestic flights and 3 hours prior to departure for international flights.

Due to particularly stringent security measures at airports, guests are advised to arrive an additional hour prior to their departure time.

International travellers may experience significant delays at South Africa's international airports. This is due to a new, and lengthy, process of capturing biometrics of passport holders. It is unclear as to how long these delays will last. Please ensure that you allow enough connection time when booking guests' flights.

Some scheduled regional and inter-lodge flights may involve multiple stops before reaching the final destination. Many flights are operated as shuttle transfers and therefore departure times may vary by up to one hour. Times are subject to change without notice.

In the event of bad weather, airlines reserve the right to drop guests off at the nearest serviceable airstrip, which may mean a road transfer to get to your final destination. Any costs resulting from such diversions would be for your own account.

The aircraft used on inter-lodge flights are small and interior space is limited. In addition, some activity and scenic air operators may have weight and/or height restrictions per guest per seat. For the sake of your own comfort, please advise us at time of booking if you are particularly bulky or tall and we will do our best to accommodate you. Please note that additional costs may apply.

andBeyond cannot be held responsible should airlines discontinue flights or change scheduled times resulting in missed connections etc. Should an amendment in a routing or itinerary be necessary, we will re-quote accordingly.

The details are in the fine print

CAR RENTAL

An international driver's license is required, unless you have an English-language driver's license with a photograph. Car rental companies generally only rent vehicles to guests between the age of 21 and 76 years. In some cases it is a requirement for the driver to have had their license for a minimum length of time (e.g. 3 years). Requirements may differ from company to company.

Renters must present a valid credit card (Visa, Mastercard or Diner's Club). American Express credit cards are also accepted by BLUU Car Rental, but not by Europcar.

An authorisation hold will be placed on the credit card upon commencement of the rental, which is to cover incidentals, such as fuel, toll fees, etc. No debit cards or cash will be accepted.

Should the rental be extended, or an incident takes place, a further hold will be placed on the renter's credit card to ensure all costs are covered.

Once the rental has been finalised, the unused portion of the authorisation hold will be released.

Vehicles are no longer fitted with express-gate e-tags; therefore, renters making use of toll roads should avoid driving through e-gates and instead make manual payments at kiosks where cash or card payments are processed.

For self-drive guests it is advisable to arrive at their safari lodge/camp no later than 14h30 as afternoon activities generally start from 15h00.

LUXURY TRAINS

Please be aware that, when travelling on the Blue Train or the Rovos Rail, you will experience distinct mechanical train sounds during the day and night that are common to rail travel. Should there be any unforeseen delays, the train may need to travel overnight to make up for setbacks and stoppages. Scheduled times and stops may change due to railway hold-ups.

Rail travel in Africa is dependent on very limited railway networks, which are run, maintained and under supervision of the governments of the countries through which the train is travelling at any given time.

Due to a number of factors, which are not controlled by the actual rail company, such as unforeseen natural events, unplanned maintenance, border crossing holdups, government rescheduling, as well as national power outages (directly affecting the availability of essential electric signals which trains are obliged to adhere to and in the absence of which they are not allowed to travel), itinerary changes may occur without prior warnings.

At times, parts of a journey may even be completed by using a different mode of transport (such as an overland bus) to ensure a destination is reached in time. In such cases, the train manager will consult with guests on board and offer them the choice to stay on board (meaning a delayed arrival), or complete the journey/stretch by making use of an alternative mode of transport for the affected portion. All efforts will always be made not to deviate from a planned itinerary, but due to factors outside of the control of the rail operator, changes may be necessary.

LUGGAGE ALLOWANCE & PASSENGER WEIGHT

As you will be travelling in vehicles and small aircraft with limited space, luggage is required to be packed in a soft bag weighing a maximum of 20 kg (44 lbs) and 5 kg (11 lbs) hand luggage. The allowance on certain smaller aircraft may be as little as 15 kg (33 lbs) which includes hand luggage and camera equipment.

Type of luggage & dimensions: Soft bags with maximum dimensions of 35cm (13.7 inches) wide x 40 cm (15.7 inches) high and 70 cm (27.5 inches) long. No hard suitcases are allowed and oversized bags may not be carried on your lap. An additional seat can be booked for extra luggage, subject to availability. Airline luggage requirements will vary slightly between airlines - some will allow rigid frames or wheels according to strict internal guidelines. We recommend soft bags with correct dimensions as a default, but can provide specific and up-to-date luggage rules on request. These rules are often updated without notification so are best checked nearer departure.

Some air operators may have weight and/or height restrictions per guest per seat. For the sake of your own comfort, please advise us at time of booking if you are particularly bulky or tall and we will do our best to accommodate you. Please note that additional costs may apply.

The details are in the fine print

For helicopter transfers, please note that the total weight allowance will be determined by the number of passengers, individual body weights, refuelling requirements, and other operational factors. In some cases, a separate road transfer for luggage may be necessary.

When travelling to any of our destinations in Africa, please remember that it's a criminal offense to be in possession of, to deal with or to traffic in wildlife products. This includes, without limitation, Ivory, Rhino horns, furs, claws, teeth, bones, eggs, meat and feathers of any form of wildlife. The penalties for violating legislation governing the possession and trafficking of wildlife products in Africa are among the most punitive in the world and may even lead to life imprisonment upon successful prosecution. To avoid any inconvenience you are strongly advised not to purchase any wildlife products of any nature from any street vendor, local market place, or village market when participating in any excursion. Only purchase wildlife products which are offered for sale at legitimate curio vendor establishments located within the duty-free demarcated area of the airport as these vendors are required by law to hold the necessary legal permits to enable them to offer for sale the wildlife products on display in their establishments.

OR Tambo International Airport has implemented restrictions on the shape of luggage that may be checked in. Please note that bags should comply with the following:

- Bags must be regularly shaped, with at least one flat surface. Round or irregularly-shaped bags will not be accepted
- Bags with long hanging straps will not be accepted

Passengers with bags not meeting these restrictions will be asked to wrap their bags at one of the wrapping stations in the airport.

Entry requirements

PASSPORTS & VISAS

For assistance with visa information and/or application we have retained the services of a specialist visa service. Please visit <https://apply.joinsherpa.com/explore/ZAF?affiliateId=andbeyondvisa&language=en-US>

To enter South Africa, a passport valid for at least 30 days after the intended date of departure is required by all nationals (the rest of Africa requires 6 months). Passports must have at least two blank visa pages (not endorsement pages) for entry stamps. Our recommendation is to ensure you have three or even four blank visa pages if you are travelling through more than one country. If there are insufficient pages, entry will be denied. Please note that even if you do not require a visa to enter South Africa, blank visa pages are still required in your passport for the applicable entry and exit stamps.

For a list of countries whose passport holders are exempt from visas for South Africa, please refer to the following website:

<http://www.dha.gov.za/index.php/immigration-services/exempt-countries>

It is imperative to check visa requirements with the South African embassy, as these may vary according to your nationality. If you intend to travel between South Africa and its neighbouring countries, it is advised that you apply for multiple entry visas.

Once again, it is a mandatory requirement that you travel to Africa with at least two blank visa passport pages, per country visited, and that your passport is valid for a minimum of 30 days (for South Africa) or 6 months (for the rest of Africa) after your date of travel.

To comply with regulation 2(1) (a) of the Immigration Regulations 2014, only Machine Readable Travel Documents (MRTDs) will be accepted to enter South Africa. Extended passports will no longer be accepted. For this reason, travellers are advised to check their travel documents.

ELECTRONIC TRAVEL AUTHORISATION (ETA)

Travellers meeting the following requirements are currently able to apply through this system:

- Passport holders from the People's Republic of China, India, Indonesia or Mexico
- Entering via OR Tambo International Airport, Cape Town International Airport or Lanseria International Airport
- 18+ years old
- In possession of a valid ordinary passport (not expiring within 6 months)

The details are in the fine print

- Able to take a selfie and scan ordinary passport with a smart device

If you meet the above criteria, then register here (<https://eta.dha.gov.za/registration>) and click on the “**Create profile**” button.

More information can be obtained here: <https://eta.dha.gov.za/>

WHAT TO EXPECT ON ARRIVAL

The time taken to clear immigration and customs will vary based on your arrival time. Guests can book an andBeyond representative to meet them on arrival and assist with formalities before escorting them to their transfer. At the discretion of airport authorities, pre-arranged VIP meet and greet services at certain airports can meet arrivals airside and escort them through expedited formalities.

TRAVELLER DECLARATION

The South African Revenue Service (SARS) has introduced a new online Traveller Declaration System, which some airlines are treating as a **mandatory requirement before allowing passengers to board.**

It allows travellers to complete and submit an online traveller declaration (on behalf of themselves and all children and infants travelling with them) and receive electronic confirmation thereof before they travel. Once submitted, a confirmation will be received via email, containing instructions on what to do when arriving at the airport.

Declaration process

- **Online Traveller Declaration System:** <https://www.sars.gov.za/travellerdeclaration/> click on **Complete Declaration**
- **Returning home:** When departing South Africa, travellers are not required to declare the same equipment again if this was declared upon arrival and proof (online confirmation or stamped TC01 form) has been retained.

NB: Even though the above website indicates that the system may be used on a voluntary basis, some airlines have a directive to enforce this requirement; therefore, we strongly advise that passengers complete the online declaration.

Excess currency

Excess currency is any amount in excess of ZAR 25 000 or any foreign currency which is convertible to Rand in excess of ZAR 25 000. Travellers must obtain written permission from the South African Reserve Bank before entering or leaving South Africa with excess currency. It is important to note that a passenger carrying foreign currency may still be stopped by a Customs officer.

If the individual cannot produce any proof establishing the origin of the foreign currency, Customs may detain the money to investigate further. Therefore, it is advisable for all travellers entering or exiting South Africa to declare foreign currency on the SARS Customs online declaration.

Declaring electronic equipment in South Africa

Travellers arriving in South Africa are advised to declare their electronic equipment, including cameras and laptops, even if they intend to take these items with them upon their departure from South Africa. Although customs officials may not always enforce this rule for travellers with standard personal electronics, it is best practice to comply, avoiding potential hassles and delays. There is currently no specific value threshold for declaring electronic equipment.

Refundable cash deposits or import duties on goods

Travellers may need to pay refundable cash deposits or import duties on certain goods brought into South Africa temporarily. Refunds are provided once the goods are shown to have left the country.

You can access the SARS Traveller Leaflet (<https://www.sars.gov.za/wp-content/uploads/Docs/Customs-Excise/Brochures/Travelers-A5-leaflet-March-2021-v7-4-panel.pdf>) which provides essential information on prohibited items, restrictions, duty-free allowances, and other pertinent customs details.

FAMILIES TRAVELLING TO SOUTH AFRICA WITH CHILDREN

The details are in the fine print

As of November 2019 children travelling on passports of visa-exempt countries will only require a valid passport to enter/exit South African ports of entry (birth certificates will no longer be a requirement for them), as long as they are accompanied by an adult.

Children in possession of a valid South African visa are not required to produce the documents already submitted as part of their visa applications.

South African minors are required to present a copy of their birth certificate/equivalent document or passport containing the details of their parents. For more details, please consult <http://www.dha.gov.za/index.php/statements-speeches/621-advisory-new-requirements-for-children-travelling-through-south-african-ports-of-entry-effective-1-june-2015>

Please note that stricter requirements may need to be adhered to in South Africa's neighbouring countries.

Exceptions (applicable to holders of South African as well as foreign visa-exempt passports):

- **If the minor is travelling unaccompanied**, they must have in their possession:
- A valid passport
- copy of his /her birth certificate
- parental consent letters
- copy of the passport(s)/identity document(s) of the parent(s) / legal guardian(s)
- contact details of the parent(s)/ legal guardian(s)
- letter from the person who is to receive the child in the Republic, containing his / her residential address and contact details in the Republic where the child will reside
- copy of the identity document / valid passport and visa or permanent residence permit of the person who is to receive the child in the Republic
- *where applicable-*
 - copy of an adoption order
 - copy of a death certificate of the deceased parent/ parents or legal guardian
 - copy of a court order granting full parental responsibilities and rights or legal guardianship in respect of the child
- **Minors in alternative care** (i.e. foster care, temporary safe care or in a youth care centre following a court order) need in their possession:
- A valid passport
- A letter from the Provincial Head of the Department of Social Development where the child resides authorising their departure from the Republic as contemplated in section 169 of the Children's Act (Act No. 38 of 2005)

Zambia

General information

INSURANCE

It is essential that adequate travel insurance be taken out prior to departure and it is important to note that it is recommended to purchase it within 14 days from paying your deposit. This should cover any medical situation such as hospitalisation, as well as cancellation, curtailment of arrangements and baggage. When you travel with andBeyond, you are automatically covered by our emergency evacuation insurance. This guarantees emergency evacuation to the nearest hospital should you suffer either severe illness or injury. This does not cover the cost of treatment once in hospital and in no way replaces your normal travel insurance. There are certain medical exclusions. Please advise us of any existing conditions in advance in order to arrange cover, subject to our insurer's approval. Please contact us for further details.

The details are in the fine print

It is important to note that some travel insurance policies may not be recognized by certain local hospitals, therefore please check with your provider if their product is accepted in your destination and seek alternative cover if necessary.

Medical Emergency Number: +27 83 300 3927 or +27 87 135 3952

CHECK-IN

When checking in, some hotels or lodges may take a pre-authorisation hold on your credit card, which will enable you to bill back expenses such as non-included meals, spa treatments or other extras to your room account. Your expenditure will then be subtracted from that hold before releasing the balance at the end of your stay. Reversing the hold may take a few days, depending on your bank. Instead of allowing a pre-authorisation hold to be put on your credit card, you may normally also choose to put down a cash deposit, or a “no post” can be added to your room, which means that you will not be able to charge anything back to your room account but, instead, settle any extras directly in cash.

In accordance with global practice most hotel and lodge check-in/out times are as follows:

- Check-in: 14h00; Check-out: 11h00

LANGUAGE

English is widely spoken throughout Southern Africa.

PHOTOGRAPHY

Bring sufficient memory cards and batteries as these are not always readily available. Remember to ask permission before taking a photograph of any local people.

The use of Unmanned Aerial Vehicles (Drones) is not allowed in any of the conservation areas we manage, until such time as their impact on wildlife and anti-poaching initiatives can be assessed. This rule applies throughout Africa, as our partners have adopted a similar stance.

GRATUITY GUIDELINE

Please note, the below are guidelines only. Gratuities are at your own discretion and are not compulsory.

Waiters and Drivers	10% of the fare or bill
Airport Meet and Greet	USD 3 - USD 5 per meet and greet
Baggage Handlers/Porters	USD 3 - USD 5 per couple
Hotel Doormen/Baggage Handlers	USD 3 - USD 5 per couple

City Guides

Private transfer	USD 5 per transfer
Private half-day tours	USD 10 per tour
Private full-day tours	USD 20 per tour

On Safari

Ranger/Guide	USD 30 per couple per day
Tracker	USD 20 per couple per day
Butler	USD 15 per couple per day
Lodge/Camp Staff	USD 30 per couple per day

CULTURAL AWARENESS

Please note that local laws, religious beliefs and cultural practices in parts of Africa may be more conservative than those in your country of origin. As these must be observed and adhered to, we suggest that guests carry out due diligence and exercise their discretion when travelling in the region.

CONTACT DETAILS

24 Hour Emergency Numbers:

Direct Guests: +27 72 607 6385

The details are in the fine print

DMC Wholesale, DMC Retail & Groups: +27 83 280 7342

Lodge Wholesale & Inbound Sales: +27 83 280 7251

Bateleur Club: +27 83 463 8923

andBeyond, South Africa, Johannesburg

Tel: +27 11 809 4300 (Office Hours Only)

Physical Address:

164 Katherine Street, Pin Mill Farm Block F

Sandown, Johannesburg, South Africa

Banking and currency

MONEY

Banks and foreign exchange bureaus are available at all international airports and main towns.

Officials may not be in a position to issue change, so please carry small denominations of cash where possible.

Most hotels and lodges accept Visa and MasterCard.

Credit card transactions could take anything up to a few months to go through, especially from more remote areas.

The currency is Kwacha (ZK); US Dollars cash is widely accepted.

It is recommended that guests carry a small amount of cash.

Climate and weather

CLIMATE

Although Zambia lies in the tropics, the altitude of the plateau ensures that the climate is seldom unpleasantly hot, except in the valleys. There are three seasons: the cool, dry winter season from May to September; the hot, dry season in October and November and the warm, wet season from December to April.

Food, drink and cuisine advice

DIETARY

Most dietary requirements can be catered for. Please advise us of any specific dietary requirements before you travel, and these will be communicated to all properties.

Clothing and dress recommendations

WHAT TO PACK

As a general guide, comfortable, casual wash and wear clothes are recommended. Muted colours are recommended for game-viewing. Game-drives are conducted in the early morning and late afternoon which can be very cold, especially in winter.

The most practical items to pack for safari are:

- Khaki, green, beige and neutral colours
- Shirts with long sleeves (even in summer, as protection from the sun and mosquitoes)
- T shirts
- Shorts or a light skirt
- Jeans or safari trousers for evenings and cooler days
- Jackets and sweaters are recommended for early morning and evening game drives
- Lightweight water-proof jacket
- Swim and beachwear
- Comfortable walking shoes

The details are in the fine print

- Sunscreen, sunglasses, hat, insect repellent, moisturizer and lip-salve are all essentials
- Binoculars and camera equipment
- Good quality safari clothing is available in safari shops
- Camouflage-patterned clothing is not permitted in Zimbabwe. This applies to any clothing that can be construed as mimicking military-wear. Travellers are urged not to wear, or even carry, any military-inspired clothing while travelling in Zimbabwe.

You might want to consider some of our recommended travel accessory options:

- These include top quality Thule luggage items, which are not only designed for your total comfort, but also for your ultra-convenience as they are accepted by most of andBeyond's preferred flight providers.
- When staying at one of our andBeyond lodges or camps in Africa (excluding our Indian Ocean Island lodges), you can enjoy the exclusive use of one pair of SWAROVSKI OPTIK binoculars per room / suite to share, for the duration of your stay. However, should your itinerary include a stay at one or more of our preferred partner properties and you wish to have access to binoculars throughout your journey, we suggest that you purchase your own pair of SWAROVSKI OPTIK binoculars from our Travel Shop.

Browse our Travel Shop for full details.

If you would like to purchase safari clothing, or browse other luggage and travel accessories to prepare for your trip, please visit www.andBeyondsafari.com for a wide selection of quality products.

Also visit <https://andbeyondsafari.com/index.php> and browse the online store.

Laundry: Most lodges, camps and hotels do their best to deliver a same day laundry service, weather permitting. Dry cleaning can be arranged at most hotels but is not available at lodges. At the lodges soap suds are generally provided in your room for delicate items. Please be mindful that, due to culture and customs in many of the areas in which we operate, some lodges/camps do not wash underwear. While most lodges/camps can arrange for your shoes to be polished, we regret that we are unable to provide a service for these to be washed.

Electricity and plug standards

ELECTRICITY

220/240 Volts AC, 50hz

It is possible that lodges in more remote areas do not have electricity and run on generator or solar power.

Health and medical information

HEALTH REQUIREMENTS

Please consult your physician for advice on **malaria** precautions before travel to Southern Africa.

Yellow Fever:

andBeyond's Terms and Conditions require you to obtain advice from your medical practitioner or travel clinic before travelling to any destination to determine if you are required to get a yellow fever vaccination, no less than 10 days prior to travel. If required, you must be able to produce a yellow fever certificate as proof of vaccination. Depending on which countries you are traveling to prior or post your stay to Southern Africa the certificate will be required. The certificate may also be required when re-entering your country of origin, or other African countries, if you have visited a destination within the yellow fever belt. For more information you may consult the following website, but we must reiterate that we advise you to visit your medical practitioner or your closest travel clinic for further information.

[https://www.who.int/publications/m/item/countries-with-risk-of-yellow-fever-transmission-and-countries-requiring-yellow-fever-vaccination-\(november-2022\)](https://www.who.int/publications/m/item/countries-with-risk-of-yellow-fever-transmission-and-countries-requiring-yellow-fever-vaccination-(november-2022))

It is not a requirement to have the yellow fever vaccination to visit Zambia. However, proof of vaccination will be required if visitors are coming from another country where the risk of transmitting yellow fever is high. All travellers over the age of 9 months are then required to have the yellow fever vaccination if they have:

The details are in the fine print

- Recently visited a high-risk country
- Spent over 12 hours in transit in a high-risk country

If guests cannot have a yellow fever vaccination for medical reasons a doctor's letter needs to be provided; signed, stamped and on an official letterhead.

Ticks:

Ticks can be found in Africa's wilderness areas. To avoid getting bitten when going on bush walks, guests are advised to take precautions by wearing long trousers, socks and boots. Please note that there is a possibility that tick bites could lead to tick bite fever. Symptoms include fever, headaches and painful, enlarged lymph glands in the area of the bite. If you experience these symptoms after returning home, please visit your doctor and advise them of the possibility of tick bite fever.

Allergies, Medication and Prescriptions:

If you suffer allergies, it is advised to take counteracting medication with you, as the medication you require may not be available due to the remoteness of these destinations.

If on medication at time of travel please ensure that you bring a sufficient supply for the entire trip, as it may be difficult to obtain after arrival. This applies to any malaria prophylaxis, prescriptions, chronic or preferred brand medication.

FIRST AID

Although most hotels and lodges are equipped with a first aid kit, we suggest that you bring a small airtight container with a few well-chosen articles, such as plasters, travel sickness tablets, antiseptic cream, pain relieving tablets for headaches, indigestion tablets, sunscreen, eye drops, insect repellent, medication for upset stomachs and after-sun moisturiser. We remind travellers who have any allergies, for example insect stings, or an asthma condition, to pack the required medication.

Safety information

SAFETY

Like anywhere else in the world, visitors must always take reasonable precautions as opportunistic crime does happen and it can be best described as when an opportunity presents itself and subsequently tempts a person to steal.

Most accommodations offer in-room or reception safes to secure your valuables.

Visitors are advised not to leave their belongings or personal property unattended.

Do not carry large sums of money or valuables on your person.

Always buy your excursions from a licensed operator, your hotel or travel agent representatives can assist you with verification.

Travel, transport and getting around

FLIGHTS

Check-in is 1½hrs prior for domestic departures and 3hrs prior for international departures.

Due to particularly stringent security measures at airports, guests are advised to arrive an additional hour prior to their departure time.

International travellers may experience significant delays at OR Tambo International Airport. This is due to a new, and lengthy, process of capturing biometrics of passport holders. It is unclear as to how long these delays will last. Please ensure that you allow enough connection time when booking guests' flights.

Scheduled regional and inter-lodge flights may involve multiple stops before reaching the final destination. Flights are operated as "shuttle transfers" and therefore departure times may vary up to 1hr. Times are subject to change without notice.

In the event of bad weather, airlines reserve the right to drop guests off at the nearest serviceable airstrip which may mean a road transfer for guests to get to their final destination. Any costs resulting from such diversions would be for your own account. Aircrafts used on inter-lodge flights are small and interior space limited. In addition, some activity and scenic air operators may also have weight and/or height restrictions. For the sake of your own comfort, please advise us at time of booking if you are particularly bulky or tall and we will do our best to accommodate you. Additional costs may apply.

The details are in the fine print

Some shuttle inter-lodge flights may depart early in the morning which means you will miss your morning activity. Regrettably, this is beyond our control as flights are scheduled to meet onward and connecting flights out of the various international airports. If a specific departure time is required, a private charter would need to be booked.

Please be advised that the departure tax out of Victoria Falls Airport to Kasane International Airport is for the guests' own account. Previously this amount fluctuated all the time and the operator (Mackair) could not advise in advance how much guests should have on-hand. It has stabilised now at a rate of USD 50.00 departure tax per person Cash Only and this is to be paid directly at the airport by the guests.

The latest helicopter flight from Benguerra Island is 12h00. If you are scheduled on an earlier flight off the island and connecting onto an International flight from Vilanculos International Airport, a short delay at the airport may be experienced.

andBeyond cannot be held responsible should airlines discontinue flights or change scheduled times resulting in missed connections etc. Should an amendment in a routing or itinerary be necessary, we will re-quote accordingly.

LUGGAGE ALLOWANCE & PASSENGER WEIGHT

When embarking on an African safari, luggage is required to be packed in a soft bag with no wheels or hard frame. These requirements differ from operator to operator, based on various conditions; however, because most of our guests travel cross border, and with more than one charter airline, we recommend that they adhere to the standard rule. Please do consult with your andBeyond consultant on the exact requirements as per your specific itinerary.

When travelling to any of our destinations in Africa, please remember that it's a criminal offense to be in possession of, to deal with or to traffic in wildlife products. This includes, without limitation, Ivory, Rhino horns, furs, claws, teeth, bones, eggs, meat and feathers of any form of wildlife. The penalties for violating legislation governing the possession and trafficking of wildlife products in Africa are among the most punitive in the world and may even lead to life imprisonment upon successful prosecution. To avoid any inconvenience, you are strongly advised not to purchase any wildlife products of any nature from any street vendor, local marketplace, or village market when participating in any excursion. Only purchase wildlife products which are offered for sale at legitimate curio vendor establishments located within the duty-free demarcated area of the airport as these vendors are required by law to hold the necessary legal permits to enable them to offer for sale the wildlife products on display in their establishments.

General Requirement for Light Aircraft

Type of luggage & dimensions: Soft bags with maximum dimensions of 35cm (13.7 inches) wide x 40 cm (15.7 inches) high and 70 cm (27.5 inches) long. No hard suitcases are allowed, and oversized bags may not be carried on your lap. An additional seat can be booked for extra luggage, subject to availability.

OR Tambo International Airport

OR Tambo International Airport has implemented restrictions on the shape of luggage that may be checked in. Please note that bags should comply with the following:

- Bags must be regularly shaped, with at least one flat surface. Round or irregularly shaped bags will not be accepted
- Bags with long hanging straps will not be accepted

Passengers with bags not meeting these restrictions will be asked to wrap their bags at one of the wrapping stations in the airport.

Proflight

- From 15kg (33lbs) with a maximum of 30kg (66lbs) soft bags depending on fare type booked. This includes hand luggage.
- The total dimension of each checked in bag must not exceed 157 cms/61 ins. - add the length, width and height of your luggage to obtain its total dimensions.

Passenger weight

- Proflight does not have set restrictions on passenger weight. Please advise your weight to double check before making a booking

Wilderness Air Zambia

The details are in the fine print

- Only soft duffel/tog type bags will be accepted - no frames or rigid structures may be transported as they physically cannot fit into the aircraft.
- The maximum dimensions of ALL bags which can be accommodated are as follows: 30 cm (11.8 inches) wide x 35 cm (13.8 inches) high and 70 cm (27.5 inches) long.
- The maximum permissible luggage allowance when travelling on a seat rate basis, including carry-on, remains strictly 20kg (44lbs) per person.
- An additional maximum of 20kg (44lbs) of luggage not longer than 75kg (165lbs) per person per flight may be purchased.

Passenger weight

- Wilderness Air Zambia would need advance warning for any guests exceeding 100kg (220lbs). This information would need to be communicated at time of booking. If Wilderness Air Zambia has not been advised prior to the flight and an additional aircraft needs to be dispatched, this cost will be passed onto the guest.

Entry requirements

PASSPORTS & VISAS

For assistance with visa information and/or application we have retained the services of a specialist visa service. Please visit <https://apply.joinsherpa.com/explore/ZAF?affiliateId=andbeyondvisa&language=en-US>

Passports are required by all foreign visitors and must be valid for six months after the intended length of stay. Please ensure that you have at least two consecutive blank visa pages (not endorsement pages) in your passport. Our recommendation is three or even four blank pages if you are travelling through more than one country. If there is insufficient space in the passport then entry could be denied.

Visa costs and requirements are specific to nationality and country of origin. It is imperative to check your visa requirements with the relevant embassies / consulates as it may vary according to your nationality.

Requirements and costs for visas can change with little notice. The official source for up-to-date visa requirements can be found by following the links by country below. Where it is possible to obtain an electronic visa, we recommend doing so.

Eligibility for visa on arrival is indicated on the official websites.

WHAT TO EXPECT

The time taken to clear immigration and customs will vary based on your arrival time. Guests can book an andBeyond representative to meet them on arrival and assist with formalities before escorting them to their transfer. At the discretion of airport authorities, pre-arranged VIP meet and greet services at certain airports can meet arrivals airside and escort them through expedited formalities.

Depending on nationality and country of origin, a visa may be required to enter. In many instances, visas must be applied for prior to travel as they cannot be arranged on arrival.

Visas that can be obtained at port of entry are payable in US dollars cash only.

ZAMBIA VISA INFORMATION

The official immigrations website for Zambia:

<https://www.zambiaimmigration.gov.zm/for-visitors>

The official e-visa site for Zambia:

<https://eservices.zambiaimmigration.gov.zm/#/home>

CROSSING BORDERS BETWEEN BOTSWANA, ZIMBABWE AND ZAMBIA BY ROAD - WHAT TO EXPECT

Zimbabwe - Zambia and Vice Versa

- Guests are required to present themselves at Immigration for photographs, passport scanning and other formalities.
- Queues can be expected at Immigration and customs control, especially during peak season (July to October).

The details are in the fine print

- If guests have bought an E-Visa online, they will be asked for a hard copy of their Visa receipt. Digital receipts will not be accepted to travellers must have a printed copy to present at the border.
- Guests will cross over the Victoria Falls Bridge - only one vehicle is allowed on this bridge at any one time, which can cause occasional delays.
- Heavy truck congestion blocking parts of the road may also cause delays.
- When crossing the border, guests may be required to change vehicles from a Zimbabwe vehicle to a Zambia vehicle, or vice-versa.
- If the guests change vehicles, this will done on the Zimbabwe side of the bridge.
- Guests may need to walk a short way with their bags to change transfers. The driver/guide will assist with the luggage and introduce the new driver/guide.

Zambia - Botswana and Vice Versa

- Guests are required to present themselves at Immigration for passport scanning and other formalities.
- Queues can be expected at Immigration and customs control, especially during peak season (July to October).
- Guests will cross the Zambia River by driving over the bridge. If travelling from Zambia, a Zambian vehicle will drive the guests across the bridge to Botswana Immigration. If traveling from Botswana, the Botswana vehicle will drive the guests across to Zambia Immigration.
- You may experience delays due to heavy truck congestion.
- When crossing from Zambia to Botswana guests will change from a closed vehicle to an open 4x4 game viewing vehicle.
- Upon entering Botswana, before immigration, guests will be required by Port Health to step on a treated mat for foot and mouth disease control. At this point, guests will be required to disinfect all of their shoes. With this in mind, we request that guests carry ALL shoes as hand luggage in a separate bag for the border crossing. The foot and mouth control is a regular occurrence and should be advised to guests as a matter of procedure.
- On the Botswana side, guests will be escorted from the car park to the Port Health facility for screening. The Zambian guide will not proceed beyond the screening point, the Botswana guide will meet the guests after the screening is complete.
- The Botswana guide will escort guests to the Zambian exit (customs and immigration) then on to Botswana entry (customs and immigration) after which they will transfer guests to their destination.
- Guests entering Zambia from Botswana will proceed across the bridge to the Zambian side, without stopping in Botswana. Botswana exit formalities and Zambia entry formalities will be completed on the Zambian side.
- The Zambian guide will meet guests after screening and will then escort them through the combined customs and immigration process and then transfer them to their destination.